



Nisga'a Lisims Government

NISGA'A FISHERIES & WILDLIFE

T 250 633 2617 / F 250 633 2971

TF 1 866 633 2145

PO Box 228 / 5101 Gitzyon St

New Aiyansh BC / Canada V0J 1A0

NISGAANATION.CA

2018 NASS RIVER SALMON STOCK ASSESSMENT UPDATE – MONDAY, 25 JUNE

The following is the second general public update for 2018 of Nass River salmon and summer-run steelhead stock assessments from the Nisga'a Lisims Government Fisheries and Wildlife Department.

All data presented in this update are preliminary and subject to change with further assessment information that becomes available and should be interpreted cautiously. For in-season assessment purposes only.

NASS RIVER ASSESSMENT OPERATIONS UPDATE

OPERATIONAL ASSESSMENT INFORMATION FOR 2018

1. Fishwheel Assessment data: 1 June to 24 June. Data summary below.
2. Meziadin Fishway data: Operation will begin on 1 July
3. Kwinageese Weir data: Operation will begin in mid-July

GITWINKSIHLKW (GW) FISHWHEELS (NASS TEST FISHERY –STARTED IN 1994 [25th year]):

The Nass River test fishery fishwheels began operation on 1 June for tagging and historical catch index assessments for salmon and summer-run steelhead. All fish caught in the GW fishwheels were released alive after tagging and/or counting. Fishwheels 1 and 2 are currently operating at 0.3 m lower than average water levels (2.7 m vs. 3.0 m) based on 1994–2017 operations after operating at record low water levels (up to 2.4 m lower than historical averages) from 1–17 June. A chart of the water levels at the test fishery follows the text summary that compares current levels to historical levels. The Nass River water temperature is 1.1 °C above average (10.1°C vs. 9.0°C) based on the 1994–2017 operations.

GREASE HARBOUR (GH) FISHWHEELS:

Start-up dates of the GH fishwheels were on 5 June (FW5), 6 June (FW6), 7 June (FW3), and 15 June (FW4) for operating four fishwheels at Grease Harbour (upstream of Ts'im Anwiihlist). The GH fishwheels are used for in-season mark-recapture tag recoveries, abundance estimates passing upstream, additional tagging (adult Chinook and Chum salmon, and Pacific Lamprey), and for selective harvesting when permitted by Nisga'a Lisims Government.

Of the 190 Sockeye caught at all fishwheels to date, all have been released. The Nass fishwheel catches are currently well below average for Sockeye, Chinook, and steelhead, and above average for Pacific Lamprey. Weekly comparisons of salmon and steelhead catches at the Gitwinksihlkw fishwheels and all fishwheels to historical levels since 1994 follow the text summary as well as a catch summary of all fish species to date. Total fishwheel catches of salmon, steelhead, and Pacific Lamprey to date are shown below including tagging results and jacks caught.

FISHWHEEL CATCH SUMMARIES	SOCK	CHIN	COHO	STEEL	PINK-EVE	CHUM	LAMP
FISHWHEEL TOTAL CATCH OF ADULTS	190	64	0	4	0	0	118
HISTORICAL AVG CUM CATCH (00-17) TO DATE	2,000	600	0	10	0	0	30
HISTORICAL AVG CUM TOTAL CATCH (00-17)	43,000	5,000	14,000	1,000	13,000	130	600
AVERAGE DAILY CATCH (5 D) OF ADULTS - GW	12	0	0	0	0	0	3
AVERAGE DAILY CATCH (5 D) OF ADULTS - GH	1	0	0	0	0	0	8
FISHWHEEL TOTAL TAGGED (OR ADIPOSE FIN MARKED)	166	59	0	0	0	0	112
FISHWHEEL TOTAL JACKS - GW ONLY	46	3	0	NA	NA	NA	NA
HISTORICAL MEAN JACKS AT GW (94-17) TO DATE	31	12	0	NA	NA	NA	NA

Other adult species and juvenile salmon catches at the fishwheels to date include: 39 Rainbow Trout, 15 Pikeminnow, 15 Peamouth Chubs, 14 Whitefish (Round), 12 Redside Shiners, 7 Cutthroat Trout, 4 Dolly Varden, 2 Seals, and 29 salmon smolts (0 Coho, 2 Chinook, 27 Sockeye).

RUN SIZE AND ESCAPEMENT ESTIMATES FOR NASS SALMON & SUMMER-RUN STEELHEAD

In-season estimates of run size and projected forecasts to Gitwinksihlkw fishwheels for adult Nass salmon and summer-run steelhead are shown below and currently based on historical catch index methods. The current run sizes for 2018 are currently below average for Nass Sockeye and Chinook salmon when compared to means to date from 1994 to 2017. Summer-run steelhead estimates begin on 1 July.

	SOCK	CHIN	COHO	STEEL
IN-SEASON RUN SIZE ESTIMATE TO DATE	4,916	1,336	-	-
HISTORICAL MEAN RUN SIZE TO GW FOR DATE (94-17)	32,000	6,000	-	-
RUN SIZE TARGET 2018 (MIN. FOR STEELHEAD)	250,000	15,000	65,000	4,200

In-season forecast projections above Gitwinksihlkw are shown below. Estimates to Gitwinksihlkw are based on two methods, mean run timing and log-regression of the in-season to final estimates to date. The current mean run timing projections are forecasting well below pre-season projections based on current passage. However, based on the current run size estimates, which are similar to last year, run size targets are still within reach based on the log regression relationship of in-season to final estimates.

The current run size projection for Nass Sockeye is ranging between 190,000 and 269,000 to reach the run size goal (250,000) based on the in-season to final method with 11% of the run entered to date based on mean-run timing. The current run size projection for Nass Chinook is ranging between 11,000 and 21,000 to reach the run size goal (15,000) based on in-season to final method with 32% of the run entered to date based on mean-run timing.

IN-SEASON FORECASTS TO GW - METHODS:	SOCK	CHIN	COHO	STEEL	24-Jun-18
1. RUN TIMING METHOD (94-17) - Mean Run timing	46,000	4,200	Too Early	Too Early	
Lower (-2 S.D.)	21,000	2,000	Too Early	Too Early	
Upper (+2 S.D.)	92,000	8,300	Too Early	Too Early	In-season to Final
2. IN-SEASON TO FINAL (regression):	229,000	15,900	Too Early	Too Early	r ² (CH) = 0.28
95% CI - lower	190,000	10,800	Too Early	Too Early	r ² (SO) = 0.51
95% CI - upper	269,000	21,000	Too Early	Too Early	r ² (CO) =
GW RUN SIZE TARGET (DEPENDING ON HARVESTS ABOVE GW)	250,000	15,000	65,000	4,200	r ² (ST) =
Run Timing % Return Estimate to GW	11%	32%	0%	0%	

Net Escapement Estimates for adult Nass salmon and summer-run steelhead to date are shown below and relative to the Upper Nass escapement goals.

IN-SEASON NET ESCAPEMENT ESTIMATES	SOCK	CHIN	COHO	STEEL
HARVEST ESTIMATES ABOVE GW TO DATE	20	421	-	-
NET ESCAPEMENT (ABOVE GW):	4,896	915	-	-
NET ESCAPEMENT TARGET (UPPER RIVER ONLY)	200,000	13,000	60,000	4,000

HARVEST ESTIMATES FOR ADULT NASS SALMON & STEELHEAD

ALASKAN FISHERIES IN SE ALASKA (information courtesy from ADFG's website):

Alaskan gillnet fisheries start dates in 2018: District 101 (Tree Point) and District 106 (Sumner and Upper Clarence) opened on 17 June. Alaskan seine fisheries start dates in 2018: District 101 (Lower Clarence/Revilla) – not open yet; District 102 (Middle Clarence) on 17 June; District 103 (Cordova) – not open yet, and District 104 (Noyes/Dall) – not open yet. The table below shows the current estimates of catches of salmon in Alaskan net fisheries in Districts 101–106 (and mean catch comparisons from 2000 to 2017) to week ending **23 JUNE 2018** based on data from ADFG. Current salmon catches are below average for Sockeye, Pink, and Coho, and average to above average for Chinook and Chum. Of the total in-season Sockeye catch reported in Alaskan fisheries to date (2,100), approximately 1,000 (47%) are estimated as Nass origin based on mean stock composition estimates from 1982 to 2017 and are currently below average (5,000) to date. The average total mean harvest of Nass Sockeye in Alaskan fisheries from 2000 to 2017 was 120,000 (range: 28,000–300,000).

IN-SEASON SE ALASKAN CUM. SALMON CATCH ESTIMATES (ADFG WEBSITE) - 2018									WEEK END: 23-Jun-18		
DISTRICTS	AREA	SOCK CATCH	AVG (00-17)	CHIN CATCH	AVG (00-17)	PINK CATCH	AVG EVE (00-16)	CHUM CATCH	AVG (00-17)	COHO CATCH	AVG (00-17)
DIST 101 GN	TREE PT	1,100	5,000	500	200	0	100	8,000	7,000	40	200
DIST 106 GN	UPP. CLAR	1,000	4,000	300	300	0	1,000	1,000	3,000	300	2,000
DIST 101 SN	LOW CLAR	0	0	0	0	0	0	0	0	0	0
DIST 102 SN	MID CLAR.	40	200	0	100	300	200	8,000	5,000	200	300
DIST 103 SN	CORDOVA	0	0	0	0	0	0	0	0	0	0
DIST 104 SN	NOYES/DALL	0	0	0	0	0	0	0	0	0	0
CUMULATIVE TOTAL		2,140	9,200	800	600	300	1,300	17,000	15,000	540	2,500

CANADIAN COMMERCIAL NET FISHERIES IN AREA 3 (information courtesy from DFO Prince Rupert):

Area 3 commercial net fisheries opened on 25 June (today) and will fish tomorrow (26 June). No reports are currently available from the fishery opening today.

DFO plan to implement management actions in Area 3 to reduce harvest impacts on the Kwinageese Sockeye stock during their migration through Area 3 in mid-July. The Nass Sockeye stock requires rebuilding from a past spawning barrier detected in 2011 that resulted in extreme poor returns in 2013 (only 397 spawners) and 2014 (only 498 spawners). Sockeye retention will not be permitted in commercial fisheries in Area 3 from approximately **9 July to 22 July** (WK 28 & 29), the anticipated peak of the Kwinageese Sockeye migration, as documented in DFO's 2018 Integrated Fisheries Management Plan (IFMP).

NISGA'A DOMESTIC (FSC) AND SALE FISHERIES:

Nisga'a domestic and sale fisheries are monitored by the Nisga'a Fisheries and Wildlife Department and began on 6 May 2018. Cumulative harvests to week ending **16 JUNE** are shown in the table below for Food, Social, and Ceremonial (FSC) catches. For the same week ending period, mean cumulative harvests from 2000 to 2017 are shown for comparison. The current total harvests estimated in 2018 to date are below average for Nass Sockeye salmon and steelhead, and near average for Chinook (see table below).

Two Nisga'a marine sale fisheries have been announced for this week, 16 hour gillnet fisheries in Area 3-12 on **28 June** and **29 June**. A total of 23 individual-sale permits have been issued to date including 13 elder permits. Permits issued to date by community: 13 Gingolx, 4 Gitlaxt'aamiks, 1 Laxgalts'ap, 2 Prince Rupert, and 3 Terrace.

NISGA'A NATION CUMULATIVE DOMESTIC (FSC) AND TOTAL CATCH SUMMARY FOR NASS SALMON AND STEELHEAD, 2018.					
FSC Reported Week Ending Period		DOMESTIC (FSC) HARVESTS TO WK END - 2018		TOTAL HARVESTS TO DATE INCLUDING SALE FISHERIES - 2018	
NASS SPECIES	Wk end	Harvest	Mean*	Harvest	Mean*
CHINOOK	16-Jun-18	1,281	1,400	1,281	1,500
SOCKEYE	16-Jun-18	540	2,400	540	6,000
PINK	16-Jun-18	0	2	0	0
COHO	16-Jun-18	0	0	0	0
CHUM	16-Jun-18	0	10	0	0
STEELHEAD	16-Jun-18	22	60	22	60

* Mean harvests from 2000-2017 for week end periods. Harvests include all gear types estimates (net, angling, seine, fishwheels, etc.).

The total harvest summary of Nass salmon and steelhead to date in all of the Nisga'a harvest fisheries is as follows:

NISGA'A TOTAL HARVEST SUMMARY	SOCK	CHIN	COHO	PINK-EVE	CHUM	STEEL
MARINE SALE FISHERY TOTAL	0	0	0	0	0	CLOSED
IN-RIVER SALE FISHERY TOTAL	0	0	0	0	0	CLOSED
INDIVIDUAL SALE (IS) FISHERY TOTAL	0	0	0	0	0	CLOSED
NLG COMMUNAL SELECTIVE TREATY FISHERY - GH FISHWHEELS	CLOSED	CLOSED	CLOSED	CLOSED	CLOSED	CLOSED
NLG COMMUNAL SELECTIVE TREATY FISHERY - SEINE	CLOSED	CLOSED	CLOSED	CLOSED	CLOSED	CLOSED
DOMESTIC (FSC) GILLNET FISHERY - WK END: JUNE 16	540	1,281	0	0	0	22
SUB TOTAL (NLG TREATY FISHERIES)	540	1,281	0	0	0	22
NLG SOCK DEMONSTRATION FISHERY HARVEST - DFO INVENTORY	CLOSED	CLOSED	CLOSED	CLOSED	CLOSED	CLOSED
GRAND TOTAL	540	1,281	0	0	0	22

TOTAL RETURN TO CANADA (TRTC) AND NISGA'A ENTITLEMENT ESTIMATES FOR NASS SALMON

Pre-season TRTC and Nisga'a entitlement forecasts:

Based on the preliminary Nass salmon return and age information from 2017, preliminary forecasts for Nass salmon and Nisga'a entitlement allocations for 2018 were calculated using pre-season forecast models. Forecast models used were a combination of sibling (Sockeye and Chinook only) and brood year mean returns that project 25%, 50%, and 75% probability point estimates. Mean absolute accuracy for pre-season total run predictions to actual are 80% for Nass Sockeye, 69% for Chinook, 52% for Pink, 62% for Coho, and 71% for Chum from 2002 to 2017.

Pre-season TRTC forecasts (50% probability estimates) for 2018 predict a below average return forecast for Nass Sockeye (377,000 vs. 567,000), Nass Area even-year Pink (635,000 vs. 738,000), Nass Chinook (19,000 vs. 31,000), Nass Chum (33,000 vs. 52,000; well below the 45,000 escapement goal), and above average return forecast for Nass Coho (223,000 vs. 196,000) based on mean TRTC estimates from 1994 to 2017. When reviewing Nass salmon returns over a 34-year period (1985–2017), the forecasted returns in 2018 are projected to be poor for Chinook (28th), Sockeye (27th) and Chum (22nd); fair for Pink (17th); and good for Coho (10th) with caution for Coastal Nass Coho salmon returns that returned in low numbers in 2015.

PRE-SEASON TRTC & ENTITLEMENT FORECASTS	SOCK	CHIN	COHO	PINK-EVE	CHUM
HISTORICAL MEAN TRTC (1994-2017)	570,000	31,000	200,000	740,000	52,000
PRE-SEASON TRTC FORECAST (50% PROBABILITY)	377,000	19,000	223,000	635,000	33,000
PRE-SEASON NISGA'A ENTITLEMENT	57,000	4,000	17,800	65,000	2,640
CUM NISGA'A UNDERAGE (+)/OVERAGE (-) AVAILABLE OR OWED: 2000-17	4,109	no surplus	3,988	16,356	-1,198
TOTAL PRE-SEASON NISGA'A CATCH POTENTIAL	61,000	4,000	22,000	81,000	1,400

In-season TRTC and Nisga'a entitlement estimates for Nass salmon:

Preliminary in-season TRTC estimates estimated by NFWD are ranging from 30,000 to 230,000 for Nass Sockeye and 4,000 to 16,000 for Nass Chinook based on current estimates of harvest, run size, and mean run-timing to date (Sockeye 10% and Chinook 20%) to Area 3 with standard deviation range estimates from 1994 to 2017 returns.

The current in-season TRTC estimates are currently tracking well below pre-season forecasts for Sockeye and Nass Chinook salmon, respectively. The current TRTC trends indicate little to no available commercial total allowable catch and lower Nisga'a entitlement targets than pre-season targets; but run timing is early and large tides are expected this week to better determine status of the Nass salmon returns in 2018. The in-season run size to final regression method indicates that run size targets could still be achieved if abundances improve this week.

Current Nisga'a entitlement ranges for: Nass Sockeye is between 7,000 and 32,000 with a current harvest estimate of 540 to date, and for Nass Chinook, between 800 and 3,300, with a current harvest of 1,281.

IN-SEASON TRTC & ENTITLEMENT ESTIMATES	SOCK	CHIN	COHO	PINK-EVE	CHUM
PROJECTED TRTC BASED ON MEAN RUN % & MR EST.	52,000	7,500	Pre-season	Pre-season	Pre-season
ESTIMATED %TRTC TO DATE: MEAN. RUN TIMING	10%	20%		0%	0%
Lower (-2 S.D.)	30,000	3,700	Pre-season	Pre-season	Pre-season
Upper (+2 S.D.)	230,000	15,800	Pre-season	Pre-season	Pre-season
IN-SEASON NISGA'A ENTITLEMENT TARGET	5,000	1,600	18,000	65,000	2,600
IN-SEASON UNDERAGE (+)/OVERAGE (-) AVAILABLE OR OWED	4,109	no surplus	3,988	16,356	- 1,198
TOTAL IN-SEASON NISGA'A TREATY CATCH POTENTIAL	9,000	1,600	22,000	81,000	1,400
MINIMUM ENTITLEMENT FORECAST	7,000	800	Pre-season	Pre-season	Pre-season
MAXIMUM ENTITLEMENT FORECAST	32,000	3,300	Pre-season	Pre-season	Pre-season

The next Nass River general stock assessment update from the Nisga'a Fisheries and Wildlife Department is planned for: **Monday, 2 July 2018.**

Nass stock assessment updates are available at the following links (no passwords are required):

Weekly updates are posted after each Monday's update to DFO and NLG's websites:

- DFO: <http://www.pac.dfo-mpo.gc.ca/fm-gp/northcoast-cotenord/nass-eng.html>
- NLG: <http://www.nisgaanation.ca/stock-assessments>

Daily and weekly run size information are also posted on Mondays, Wednesdays, and Fridays to the following site:

- <ftp://ftp.lgl.com/Nass%20Stock%20Assessment%20Updates/>



Photo 1. Sockeye Salmon caught and tagged at Gitwinksihlkw fishwheels on 25 June 2018.



Photo 2. Chinook Salmon caught and tagged at Gitwinksihlkw fishwheels on 25 June 2018.

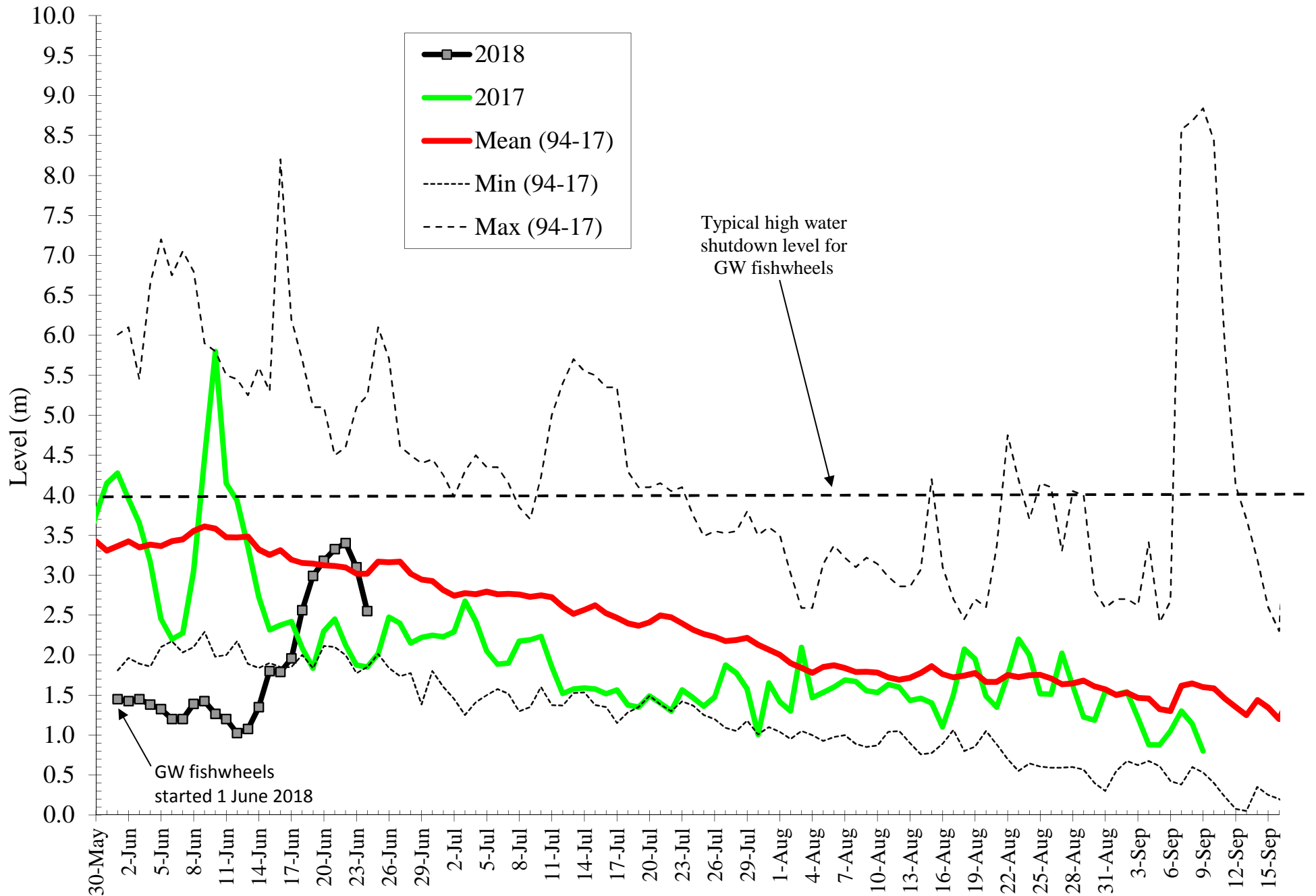


Photo 3. Chum Salmon caught and tagged at Gitwinksihlkw fishwheels on 25 June 2018.

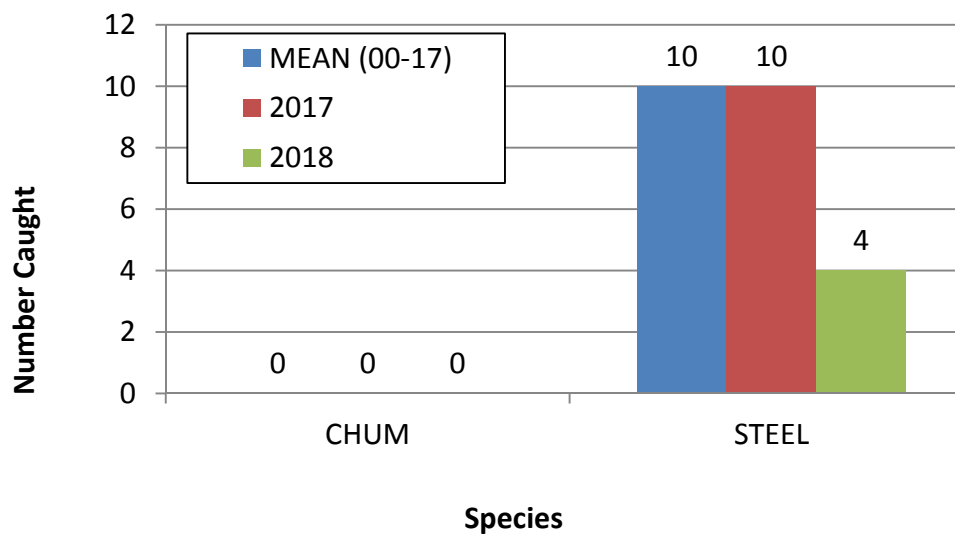
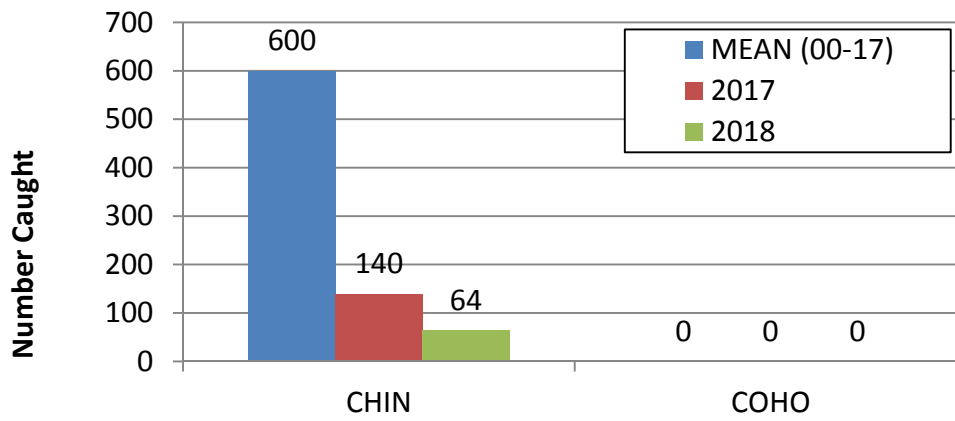
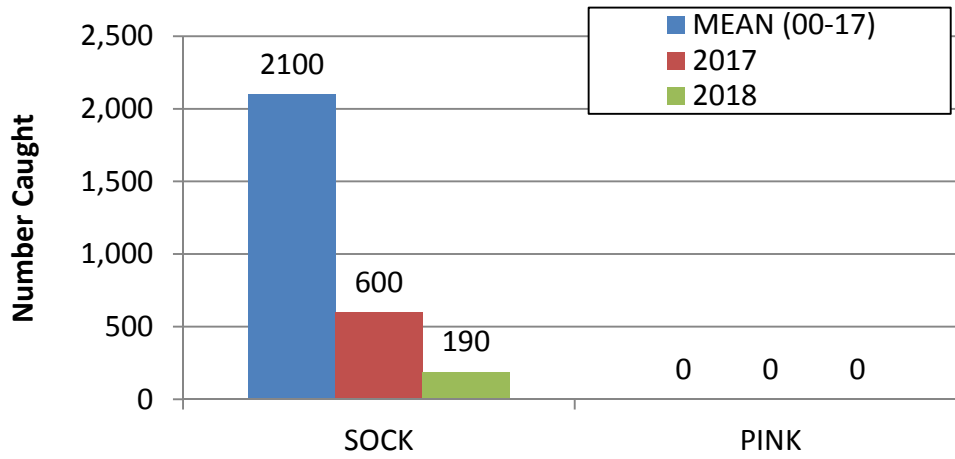


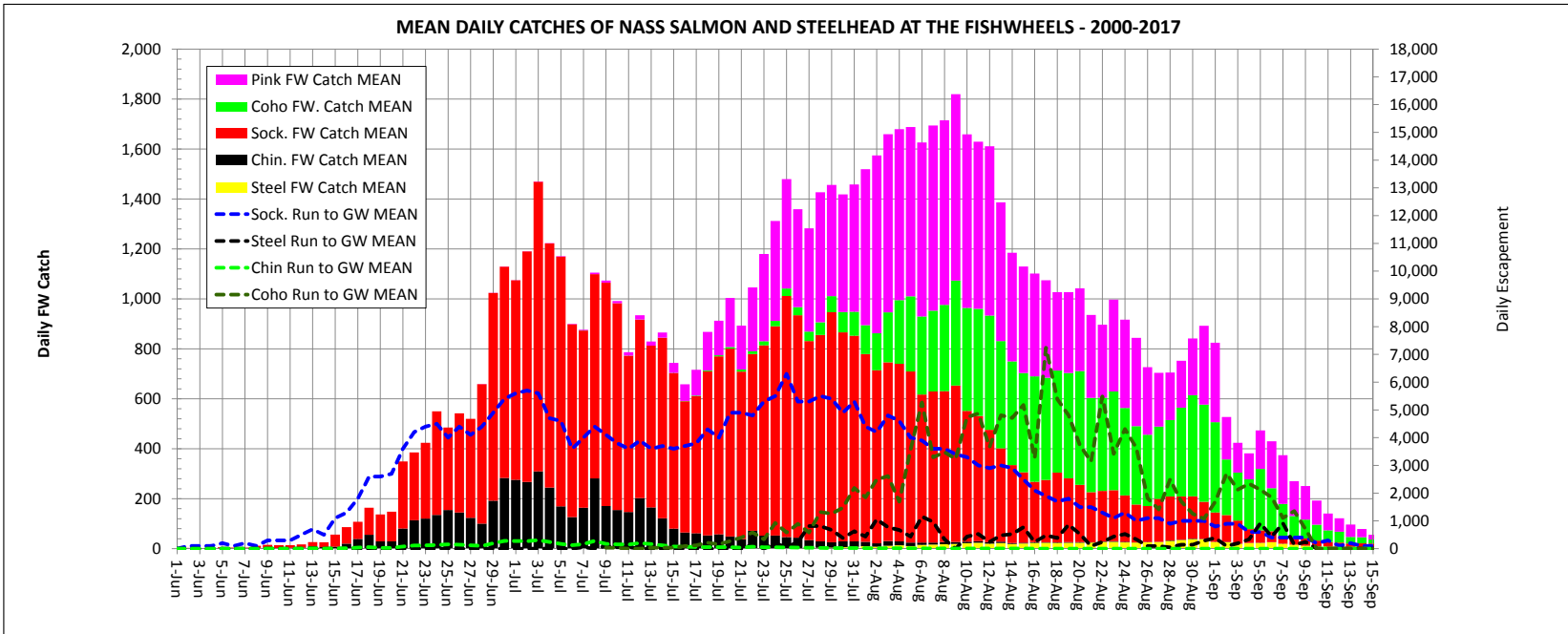
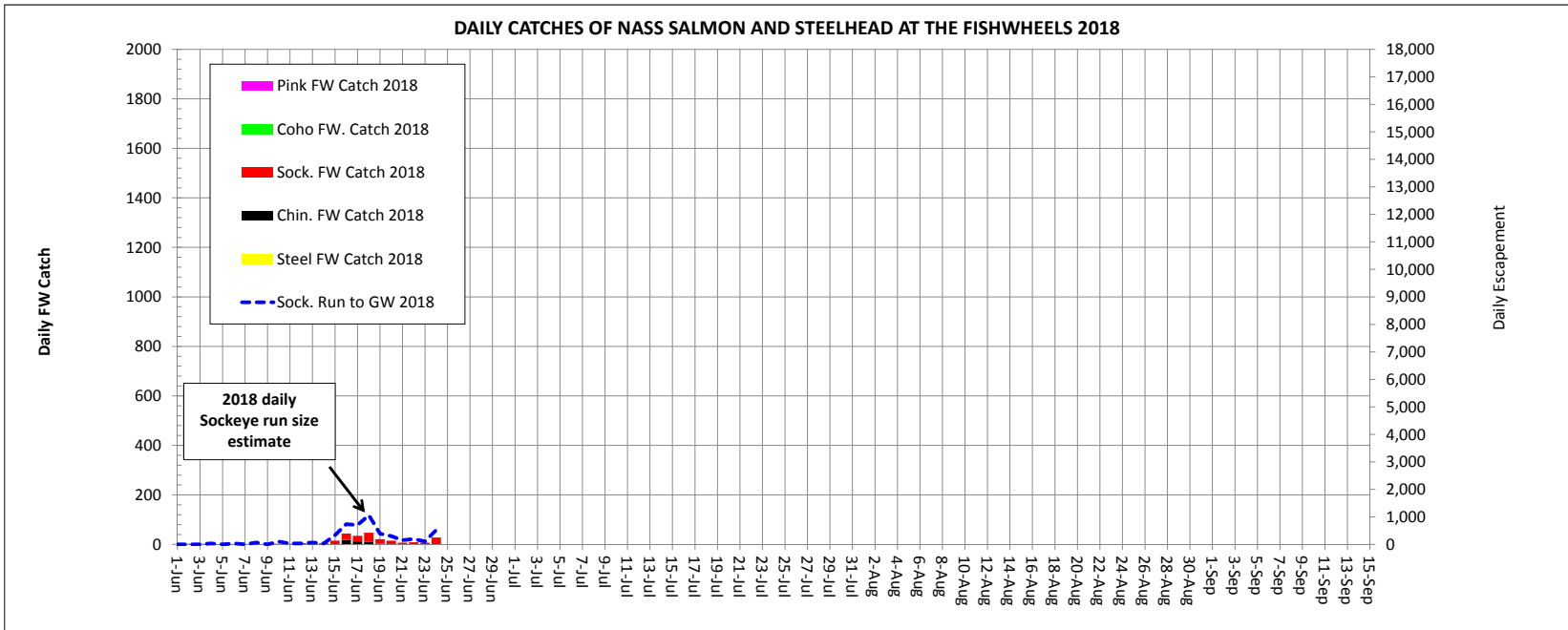
Photo 4. Pacific Lamprey caught and tagged at Gitwinksihlkw fishwheels, 21 June 2018.

Daily Water Level at Gitwinksihlkw Fishwheels 2018

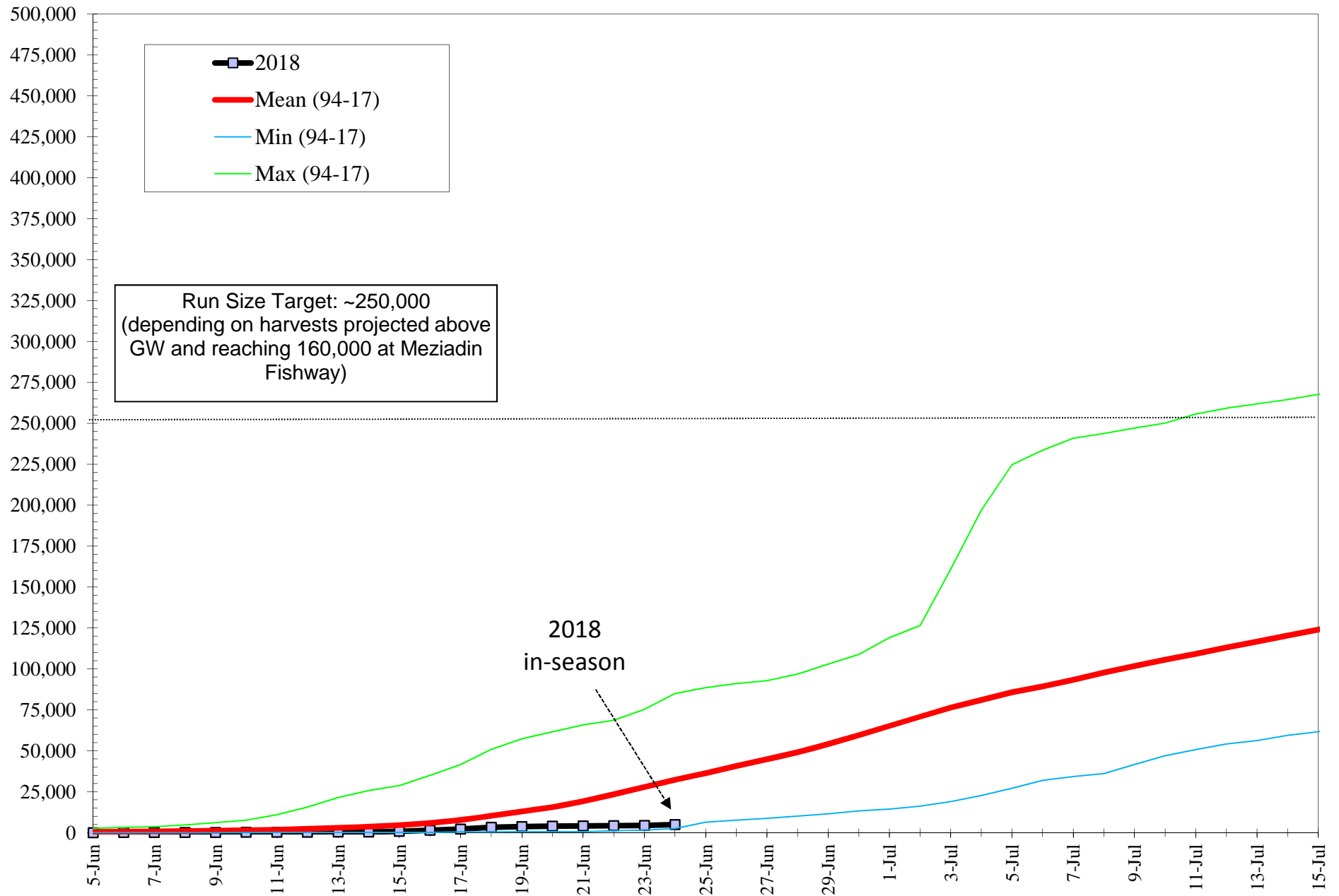


Nass Fishwheel Catches 2018 - 24 JUN

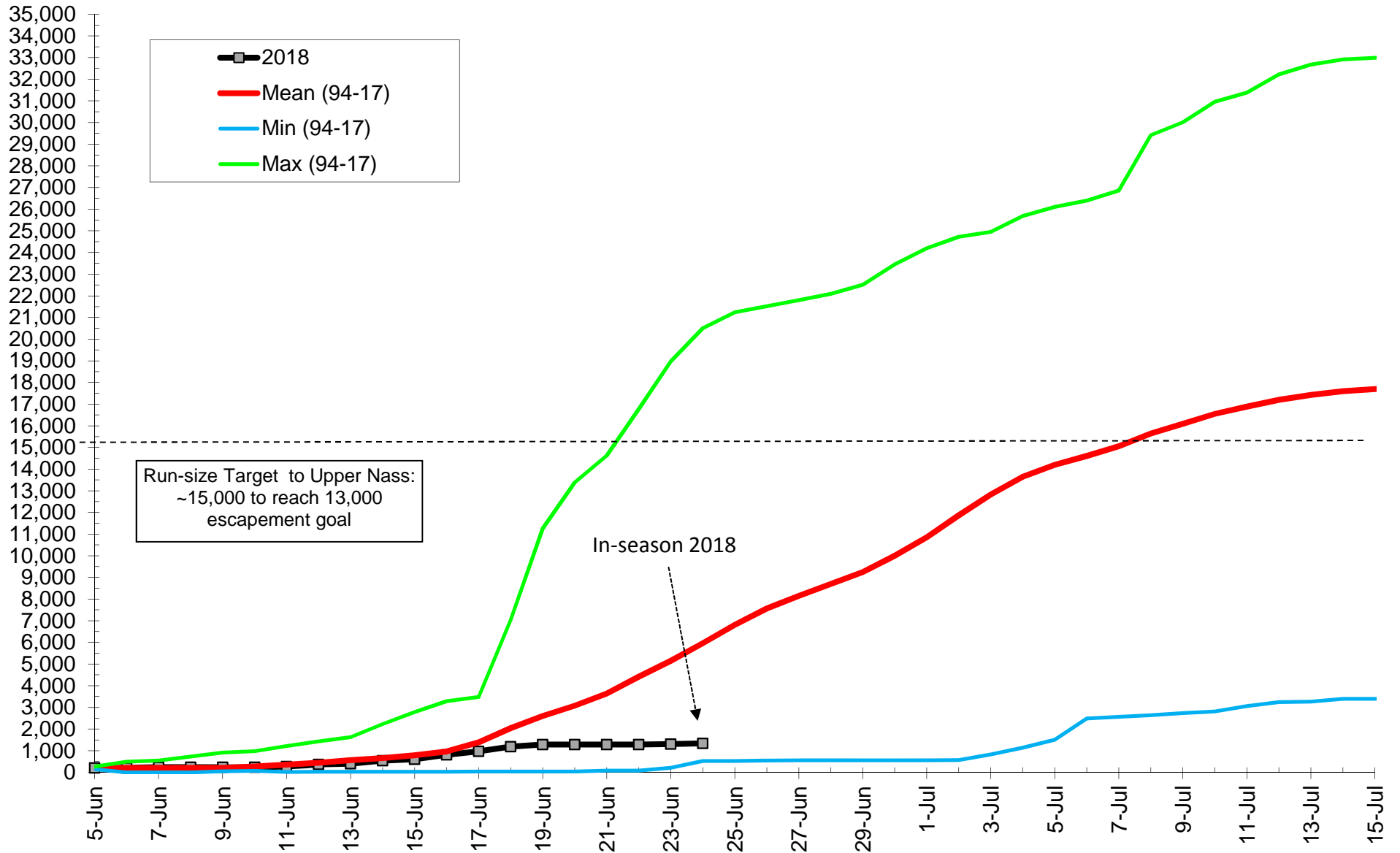




Nass Sockeye Cum. Run Size to Gitwinksilhkw Fishwheels 2018 versus 94-17 Mean, Min, Max returns (before upriver harvests)



Cumulative Nass Adult Chinook Run Size to Gitwinksihlkw 2018 vs 94-17 Mean, Minimum and Maximum returns (before up river harvests)



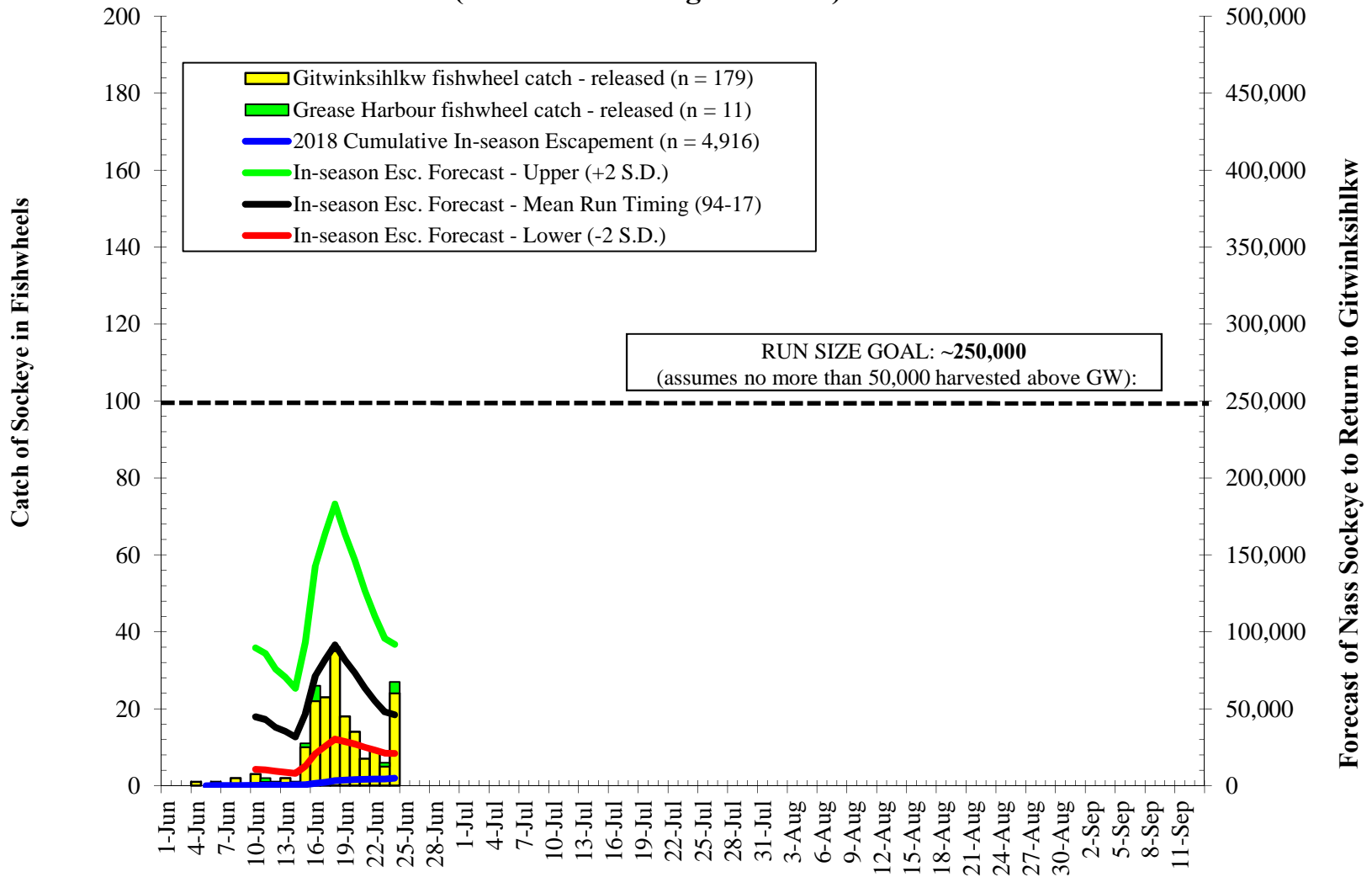
Cumulative Daily Run Sizes of Adult Nass River Sockeye Salmon (≥ 45 cm NFL) to Gitwinksihkw Fishwheels, 2000-2018.

Note: In-season cum. values with yellow shading are preliminary and will change as these fish pass the upper fishwheels to finalize mark-recapture data over a 5-d period.

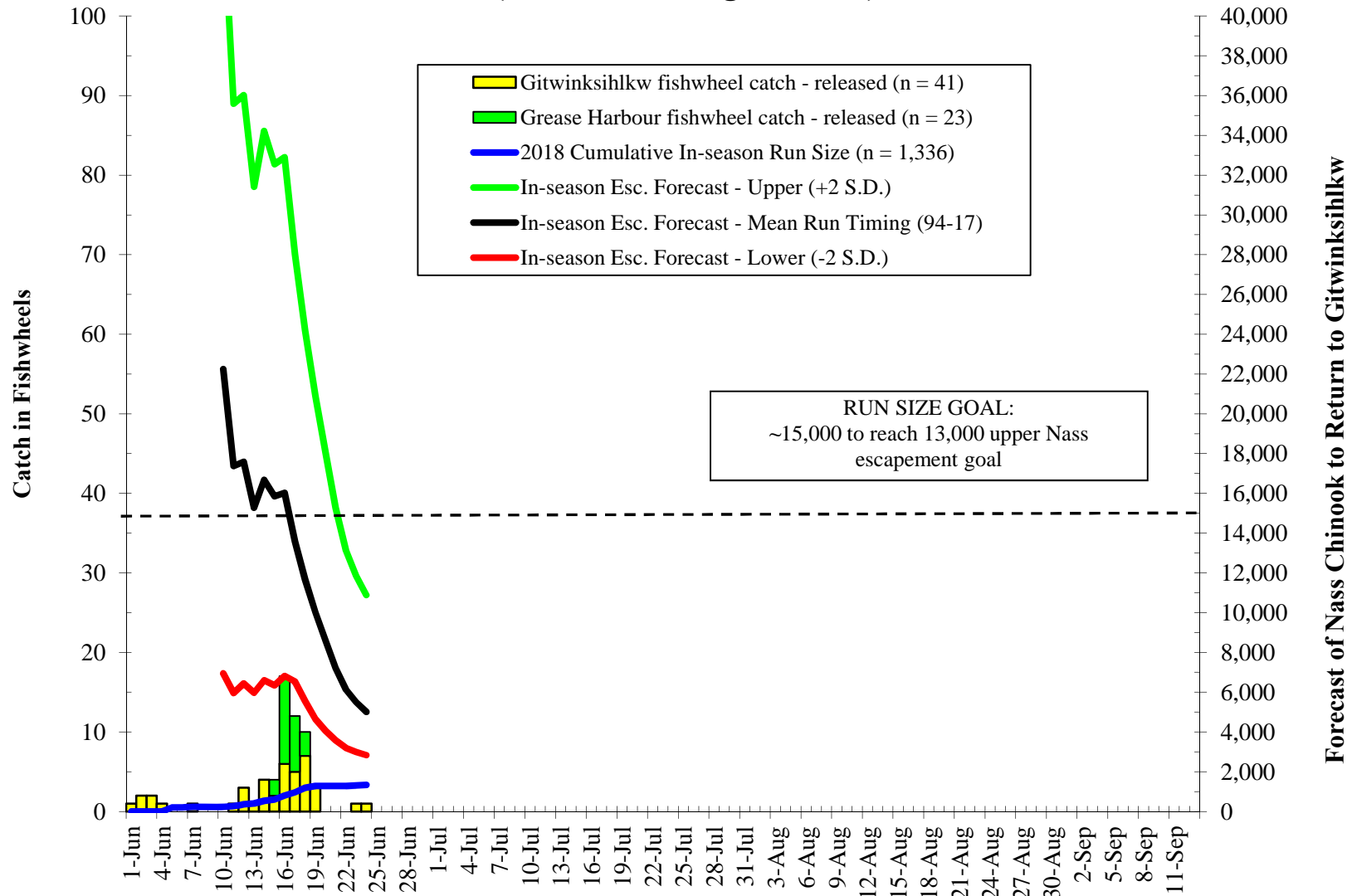
Date	Cumulative run size																	IN-SEASON (FW-MR)			
	2000	2001	2002	2003	2004	2005	2006	2007	2008	2009	2010	2011	2012	2013	2014	2015	2016	2017	2018 Cum	Mean (94-17)	2018 Daily
1-Jun													216	0	0	0	0	0	0	0	0
2-Jun										175	119		809	0	0	0	0	0	0	0	100
3-Jun									175	119		1,173	93	275	0	0	0	0	0	0	200
4-Jun									175	158		1,609	278	687	0	128	14	34	300	34	34
5-Jun						40				175	238		2,646	432	824	283	193	58	34	500	0
6-Jun						40			207	175	360	25	3,245	494	1,510	534	324	101	67	600	34
7-Jun						121			326	175	401	75	3,682	572	2,060	1,069	455	173	67	800	0
8-Jun		864				229	47		533	175	441	275	4,754	788	3,444	1,699	618	216	134	900	67
9-Jun		1,326				229	209		741	175	645	524	6,136	1,070	5,060	1,983	749	245	134	1,200	0
10-Jun		1,505				229	419		1,127	175	645	699	7,027	1,523	7,644	2,141	1,010	245	235	1,500	101
11-Jun		1,521			174	364	419		1,542	175	849	1,024	7,398	2,071	10,921	2,487	1,239	245	268	1,800	34
12-Jun	111	1,814			1,059	836	419		1,928	175	1,134	1,322	7,413	3,136	15,583	3,811	1,827	245	302	2,300	34
13-Jun	111	2,577			1,783	1,196	419		2,314	175	1,294	1,620	7,413	4,137	21,491	5,102	2,317	245	369	3,000	67
14-Jun	111	2,756		1,511	2,375	1,723	419		2,551	175	1,414	2,366	8,430	5,436	25,737	7,208	2,839	282	402	3,500	34
15-Jun	111	3,032		5,204	3,328	2,250	419		2,758	175	1,733	3,484	10,465	7,174	28,694	9,911	3,002	505	738	4,600	335
16-Jun	553	3,877		10,343	4,973	3,776	419	154	3,466	1,773	2,092	5,671	12,009	8,441	34,958	14,815	3,263	703	1,476	5,900	738
17-Jun	2,517	4,832		15,268	8,689	6,161	419	488	4,587	4,447	2,691	6,690	12,082	9,108	41,540	20,661	3,492	826	2,175	7,700	700
18-Jun	4,342	6,216		20,996	17,734	9,656	419	561	6,210	8,336	4,327	9,126	12,446	10,816	50,857	26,413	3,851	1,378	3,240	10,300	1,065
19-Jun	7,799	6,687		27,393	23,851	11,760	605	561	9,868	13,233	6,282	10,577	13,478	12,777	57,344	34,868	4,373	2,018	3,632	12,900	392
20-Jun	11,781	7,033		39,866	24,670	13,426	2,630	561	13,792	17,748	9,109	12,107	13,711	13,684	61,573	40,714	5,287	2,431	3,937	15,600	305
21-Jun	17,506	7,075	29,917	49,020	24,670	15,863	4,702	659	19,605	23,523	12,059	13,836	14,572	15,845	65,738	46,705	6,691	2,883	4,089	19,200	152
22-Jun	24,476	7,075	53,842	52,179	24,670	21,386	7,844	1,077	23,216	31,305	16,811	16,598	17,368	18,620	68,743	56,095	9,042	3,422	4,285	23,400	196
23-Jun	32,662	7,075	75,318	55,636	24,670	26,505	12,966	1,616	24,852	40,581	23,210	19,996	17,866	24,605	70,093	65,771	11,883	4,463	4,394	27,800	109
24-Jun	42,231	7,741	84,932	63,106	24,670	31,011	17,086	2,573	30,400	53,871	28,552	24,229	17,866	32,181	73,868	75,066	14,169	5,303	4,916	32,300	522
25-Jun	55,229	10,934	88,616	70,810	24,670	33,641	20,461	7,209	36,366	65,154	33,615	26,911	17,866	34,456	75,537	82,174	17,303	6,401		36,300	
26-Jun	72,182	16,443	91,072	76,530	26,511	35,773	23,347	10,058	40,975	72,579	39,888	30,271	17,866	44,050	78,019	88,498	20,960	7,698		40,700	
27-Jun	79,898	22,058	91,072	80,990	29,568	38,720	25,582	15,416	45,804	79,358	45,962	35,037	17,888	51,420	87,281	92,872	25,459	8,782		44,800	
28-Jun	79,898	25,084	91,072	84,831	35,665	42,868	27,728	22,065	50,633	86,952	51,354	39,940	18,832	77,165	91,753	96,785	29,051	10,051		49,200	
29-Jun	79,898	26,779	98,717	86,966	41,467	48,063	32,777	29,196	54,242	91,203	55,440	43,995	31,382	91,289	94,676	102,875	34,029	11,449		54,100	
30-Jun	79,898	30,487	102,127	89,501	48,006	54,382	38,689	36,770	58,643	94,237	58,436	48,384	42,726	96,013	97,207	108,877	38,181	13,232		59,500	
1-Jul	85,966	33,888	108,610	92,734	51,160	58,517	42,023	43,172	67,993	97,871	61,322	52,772	55,482	100,305	98,557	119,099	41,031	14,430		65,100	
2-Jul	103,938	35,981	126,584	93,814	56,227	61,515	45,858	45,336	76,305	102,054	62,848	55,662	75,066	104,651	101,507	126,156	42,798	16,189		70,800	
3-Jul	112,961	37,197	160,994	96,537	62,259	63,453	51,443	48,452	76,305	105,208	63,774	58,654	88,722	108,543	103,801	132,554	44,816	18,975		76,400	
4-Jul	115,310	38,313	196,911	99,056	65,054	64,892	58,362	53,305	76,305	107,865	64,777	60,738	95,873	111,235	104,522	139,039	47,276	22,723		81,100	
5-Jul	117,760	39,513	224,762	101,438	69,166	67,550	64,793	59,239	76,305	110,495	66,514	62,650	98,807	112,684	106,109	145,982	49,066	27,040		85,700	
6-Jul	117,760	40,914	233,579	103,953	74,438	69,271	68,722	62,785	76,305	112,850	68,813	65,152	103,551	113,873	108,589	153,038	52,046	31,961		89,300	
7-Jul	117,958	42,161	240,891	106,318	79,176	72,042	71,557	64,873	86,686	115,714	73,241	69,761	105,938	116,880	110,309	159,675	55,012	34,307		93,300	
8-Jul	120,535	45,210	243,807	109,093	88,294	75,611	75,379	71,881	96,917	117,862	80,018	72,385	107,844	119,621	112,591	165,412	57,096	36,132		97,700	
9-Jul	126,179	46,974	247,158	111,492	94,159	77,789	78,285	76,646	105,678	122,393	83,125	73,734	109,302	122,422	114,737	171,704	59,973	41,552		101,800	
10-Jul	132,168	49,577	250,162	113,304	100,632	81,564	81,203	81,381	112,694	125,670	87,773	74,808	110,104	125,989	116,806	178,531	63,656	47,060		105,600	
11-Jul	135,632	50,732	255,678	115,573	104,618	85,967	85,121	85,702	117,038	129,196	93,589	76,521	110,617	128,878	118,206	184,230	66,808	54,638		109,200	
12-Jul	140,067	54,206	259,269	117,890	108,888	90,486	89,920	86,278	119,205	131,682	98,109	79,745	111,188	131,649	120,808	194,202	70,047	61,027		113,100	
13-Jul	142,248	56,301	261,891	119,333	115,590	95,442	94,695	86,278	122,817	134,647	101,199	85,035	113,917	132,769	123,616	200,631	72,877	66,447		116,700	
14-Jul	145,873	59,389	264,572	122,672	121,616	100,230	98,327	86,278	126,974	137,077	103,602	95,295	117,312	134,614	127,659	207,687	75,658	70,941		120,400	
15-Jul	147,184	61,634	267,697	124,472	128,259	102,695	100,895	86,278	131,854	139,073	106,100	104,110	120,872	137,242	132,123	212,945	81,378	75,436		124,000	
16-Jul	149,032	66,920	270,225	127,797	130,229	104,339	104,774	86,278	137,633	141,826	106,863	112,758	124,421	141,659	136,082	218,285	86,476	80,836		127,700	
17-Jul	150,546	72,272	276,077	130,616	133,526	108,093	108,037	86,278	142,705	144,324	107,740	117,770	126,835	147,866	141,276	221,173	90,853	85,383		131,500	
18-Jul	151,917	79,555	281,561	134,275	137,506	115,877	111,915	86,278	145,257	146,419	110,337	124,416	131,634	155,582	146,751	226,540	96,399	89,456		135,800	
19-Jul	153,443	83,510	286,433	136,231	141,050	123,640	114,997	90,356	147,135	147,982	113,473	133,203	137,302	162,850	150,907	229,559	100,385	94,098		139,800	
20-Jul	154,540	87,412	291,060	142,802	146,018	133,291	119,238	93,290	150,432	150,540	118,716	142,564	145,152	170,566	157,059	232,455	106,275	99,309		144,700	
21-Jul	155,565	87,412	298,146	146,769	149,068	138,063	124,476	96,029	154,763	154,254	124,889	150,394	152,975	179,125	161,865	234,426	114,234	104,472		149,600	
22-Jul	157,711	87,412	303,763	155,140	153,585	141,224	130,022	98,444	160,692	159,775	129,446	157,389	156,631	185,644	168,786	239,499	119,947	109,493		154,400	
23-Jul	160,552	87,412	312,922	162,777	157,073	145,381	135,369	104,582	166,548	165,073	134,395	164,784	163,011	192,810	174,522	247,385	123,543	112,967		159,700	
24-Jul	164,377	90,640	327,029	169,680	162,273	149,641	140,499	109,959	170,288	168,584	140,324	170,836	170,726	198,234	178,271	258,659	127,894	115,863		165,200	
25-Jul	166,023	105,836	341,720	178,156	168,096	156,127	146,226	115,406	174,224	172,279	147,993	178,246	177,785	201,618	183,173	271,453	131,571	118,952	</		

Cumulative Daily Run Sizes of Adult Nass River Chinook Salmon (≥ 50 cm NFL) to Gitwinksihlkw Fishwheels, 2000-2018.																			IN-SEASON		
Note: In-season cum. values with yellow shading are preliminary and will change as mark-recapture data finalize over a 5-d period as fish pass the upper fishwheels.																					
Date	2000	2001	2002	2003	2004	2005	2006	2007	2008	2009	2010	2011	2012	2013	2014	2015	2016	2017	2018 Cum	Mean (94-17)	2018 Daily
5-Jun-18																			201	205	201
6-Jun-18						14			23		488			24	0	0	0	0	201	205	0
7-Jun-18		23				72			69		548		24	17	97	0	46	0	235	205	34
8-Jun-18		168				72	47		115		731		24	50	97	0	68	25	235	205	0
9-Jun-18		306				72	141		138		914		47	67	161	59	91	50	235	205	0
10-Jun-18		345				72	157		208		975		71	67	290	88	114	151	235	269	0
11-Jun-18		352			16	101	157		600		1,219	21	71	84	483	133	228	201	268	355	34
12-Jun-18	32	559			49	173	157		669		1,280	106	95	134	772	177	319	226	369	439	101
13-Jun-18	32	1,248			98	404	157		669		1,524	212	102	167	901	177	410	251	402	567	34
14-Jun-18	32	1,409			147	505	157		715		1,645	212	126	301	1,030	177	547	251	537	660	134
15-Jun-18	32	1,471			279	245	549		738		1,828	212	134	318	1,287	251	707	251	604	787	67
16-Jun-18	161	1,731		1,164	636	664	157	25	853	159	2,499	276	142	318	1,706	487	912	251	805	961	201
17-Jun-18	850	2,252		2,513	1,908	1,141	157	37	1,222	319	2,742	467	142	351	2,092	811	1,322	301	967	1,386	162
18-Jun-18	1,410	2,903		5,042	3,946	2,065	157	37	1,315	546	3,352	616	142	485	2,478	1,976	1,527	352	1,190	2,045	222
19-Jun-18	2,013	3,209		6,035	4,386	2,628	173	37	1,730	865	4,083	722	300	619	2,768	2,403	1,573	553	1,280	2,602	91
20-Jun-18	2,928	3,278		7,059	4,418	2,859	361	37	2,168	1,275	5,058	892	457	686	2,929	2,624	1,687	653	1,280	3,074	0
21-Jun-18	4,188	3,278	866	11,838	4,418	3,148	896	86	2,629	2,345	6,643	977	457	686	3,315	3,170	1,801	754	1,280	3,637	0
22-Jun-18	5,480	3,278	2,553	16,771	4,418	3,725	1,760	86	2,883	4,484	8,471	1,253	489	719	3,701	3,361	2,006	904	1,280	4,418	0
23-Jun-18	7,450	3,278	4,421	18,974	4,418	4,592	3,284	210	2,883	6,738	9,933	1,401	505	803	3,991	3,730	2,165	1,181	1,309	5,146	28
24-Jun-18	9,452	3,286	5,816	20,510	4,418	6,122	5,357	1,479	3,114	11,109	11,335	1,593	520	837	4,280	4,172	2,553	1,281	1,336	5,959	27
25-Jun-18	11,659	3,692	6,144	21,240	4,418	7,826	9,662	1,886	3,483	15,388	12,615	1,869	528	937	4,474	5,086	2,826	1,306		6,809	
26-Jun-18	12,746	6,380	6,354	21,519	4,418	9,270	12,553	2,613	4,475	15,912	13,834	2,187	544	1,054	4,860	6,767	3,100	1,331		7,562	
27-Jun-18	12,972	9,827	6,354	21,798	4,484	9,949	13,024	3,919	5,766	16,686	14,983	2,718	552	1,104	4,924	7,976	3,373	1,482		8,145	
28-Jun-18	12,972	10,546	6,354	22,093	4,516	10,454	13,134	5,201	6,873	20,100	15,845	3,164	552	1,221	5,600	9,259	3,738	1,784		8,697	
29-Jun-18	12,972	10,738	8,168	22,512	4,908	11,003	13,590	5,571	7,289	22,172	16,454	3,461	552	1,238	5,697	10,615	4,331	1,859		9,250	
30-Jun-18	12,972	11,067	9,864	22,776	5,658	11,249	16,292	6,076	7,496	23,447	16,637	3,843	552	1,389	5,761	11,676	4,923	2,035		10,006	
1-Jul-18	13,134	13,495	10,821	22,900	6,130	11,494	19,340	6,187	8,027	24,198	16,759	4,311	552	1,506	6,276	12,148	5,334	2,085		10,855	
2-Jul-18	13,747	19,538	11,933	22,915	7,370	11,711	21,414	6,434	8,811	24,721	16,820	4,757	568	3,079	6,855	12,826	5,676	2,135		11,864	
3-Jul-18	14,727	24,501	12,544	23,117	9,163	12,028	22,419	7,679	8,811	24,949	17,003	5,181	828	5,287	7,531	14,168	6,542	2,236		12,833	
4-Jul-18	15,244	25,688	13,291	23,427	10,761	12,360	23,001	11,968	8,811	25,382	17,124	5,861	1,135	6,592	8,143	14,890	7,020	2,286		13,646	
5-Jul-18	15,405	26,110	13,829	23,877	12,408	12,635	23,535	13,287	8,811	25,837	17,124	6,901	1,506	7,061	8,625	15,849	7,431	2,437		14,199	
6-Jul-18	15,405	26,393	14,385	24,637	13,337	12,649	23,786	13,521	8,811	26,087	17,246	7,475	2,578	7,479	9,108	16,999	7,750	2,487		14,614	
7-Jul-18	15,416	26,860	14,786	25,211	13,386	12,707	24,053	15,924	8,857	26,224	17,307	8,324	4,233	7,646	9,526	17,765	7,864	2,562		15,049	
8-Jul-18	15,545	29,418	15,051	25,956	13,467	13,010	24,116	19,807	9,872	26,338	17,734	8,515	5,574	8,115	9,526	18,620	7,909	2,638		15,650	
9-Jul-18	15,911	30,008	15,124	26,189	13,630	13,487	24,242	21,878	12,224	26,543	17,917	8,685	6,062	8,684	9,687	19,078	8,046	2,738		16,084	
10-Jul-18	16,406	30,958	15,224	26,406	13,859	14,079	24,367	23,110	15,799	26,747	18,039	8,812	6,819	8,935	10,234	19,387	8,183	2,814		16,554	
11-Jul-18	16,826	31,379	15,279	26,530	14,169	14,526	24,587	23,172	18,152	26,952	18,160	9,046	7,434	9,219	10,428	19,579	8,570	3,065		16,890	
12-Jul-18	18,161	32,221	15,306	26,654	14,690	14,728	25,137	23,172	19,190	26,998	18,282	9,195	7,671	9,286	10,653	19,741	8,753	3,241		17,203	
13-Jul-18	18,753	32,681	15,370	26,732	15,342	14,858	26,064	23,172	19,351	27,066	18,404	9,301	7,789	9,387	10,975	19,756	8,981	3,266		17,421	
14-Jul-18	19,345	32,911	15,406	26,840	15,783	15,017	26,661	23,172	19,513	27,294	18,465	9,471	7,797	9,420	11,168	19,770	9,163	3,391		17,594	
15-Jul-18	19,582	32,987	15,443	26,996	15,946	15,104	26,834	23,172	19,836	27,521	18,587	9,556	7,797	9,504	11,297	19,829	9,231	3,391		17,699	
16-Jul-18	19,776	33,148	15,452	27,058	16,027	15,133	26,944	23,172	20,043	27,544	18,587	9,640	7,797	9,520	11,747	20,051	9,322	3,492		17,791	
17-Jul-18	19,970	33,317	15,507	27,213	16,027	15,219	27,148	23,172	20,159	27,749	18,648	9,768	7,805	9,537	11,876	20,286	9,414	3,617		17,884	
18-Jul-18	20,013	33,508	15,534	27,476	16,092	15,277	27,227	23,283	20,228	27,863	18,648	9,895	7,915	9,587	12,005	20,493	9,482	3,693		17,974	
19-Jul-18	20,077	33,608	15,543	27,709	16,174	15,364	27,352	23,369	20,274	27,954	18,770	10,023	7,994	9,604	12,069	20,581	9,505	3,843		18,051	
20-Jul-18	20,153	33,654	15,580	27,926	16,223	15,407	27,384	23,542	20,297	28,022	18,770	10,108	8,018	9,604	12,101	20,655	9,550	3,843		18,108	
21-Jul-18	20,163	33,654	15,607	28,082	16,272	15,479	27,478	23,862	20,343	28,159	18,953	10,235	8,025	9,621	12,101	20,714	9,550	3,843		18,174	
22-Jul-18	20,163	33,654	15,625	28,159	16,288	15,479	27,525	24,257	20,389	28,318	19,014	10,362	8,120	9,704	12,165	20,788	9,550	3,944		18,238	
23-Jul-18	20,239	33,654	15,671	28,268	16,304	15,595	27,525	24,700	20,412	28,432	19,014	10,426	8,286	9,738	12,230	20,802	9,573	4,070		18,307	
24-Jul-18	20,325	33,700	15,680	28,361	16,386	15,624	27,541	25,082	20,412	28,477	19,014	10,490	8,609	9,755	12,262	20,817	9,573	4,120		18,369	
25-Jul-18	20,368	33,769	15,707	28,438	16,516	15,653	27,541	25,551	20,459	28,500	19,014	10,554	9,082	9,771	12,294	20,832	9,596	4,170		18,440	
26-Jul-18	20,411	33,853	15,707	28,531	16,533	15,696	27,572	25,748	20,528	28,591	19,075	10,596	9,184	9,805	12,455	20,847	9,642	4,170		18,494	
27-Jul-18	20,422	33,960	15,735	28,563	16,630	15,739	27,588	25,994	20,574	28,637	19,075	10,660	9,271	9,838	12,584	20,935	9,687	4,220		18,548	
28-Jul-18	20,433	34,021	15,744	28,609	16,647	15,739	27,604	26,192	20,620	28,705	19,136	10,702	9,531	9,855	12,616	21,009	9,710	4,245		18,595	
29-Jul-18	20,443	34,075	15,753	28,656	16,696	15,768	27,604	26,266	20,666	28,728	19,196	10,787	9,768	9,855	12,616	21,038	9,710	4,245		18,630	
30-Jul-18	20,486	34,167	15,789	28,764	16,728	15,783	27,667	26,364	20,689	28,751	19,257	10,830	9,870	9,888	12,713	21,127	9,710	4,245		18,673	

Nass Sockeye (≥ 45 cm NFL) Run Forecasts to Gitwinksihlkw Fishwheels 2018 (Mean Run timing - 1994-17)



Nass Chinook (≥ 50 cm NFL) Forecasts to Gitwinksihlkw Fishwheels 2018 (Mean Run timing - 1994-17)



2018 Nass Fishwheel Catches

	GW		GW Total	GH				GH Total	Grand Total
Data	FW1	FW2		FW3	FW4	FW5	FW6		
Chin-adult catch	8	33	41	1	5	10	7	23	64
Chin-tagged	8	29	37	1	5	10	6	22	59
Chin-recaps	0	0	0	0	0	0	0	0	0
Chin-Jacks	0	1	1	0	0	2	0	2	3
Sum of CH Harv	0	0	0	0	0	0	0	0	0
Sockeye-adult catch	18	161	179	1	3	6	1	11	190
Sockeye-tagged	18	148	166	0	0	0	0	0	166
Sum of sk-radio	7	58	65	0	0	0	0	0	65
Sockeye-recaps	0	2	2	0	0	1	0	1	3
Sockeye_jacks	8	38	46	0	0	0	0	0	46
Sum of sk_harvest_total	0	0	0	0	0	0	0	0	0
Coho-adult catch	0	0	0	0	0	0	0	0	0
Coho-tagged	0	0	0	0	0	0	0	0	0
Coho-recaps	0	0	0	0	0	0	0	0	0
Coho-jack	0	0	0	0	0	0	0	0	0
Sum of co_harvest_total	0	0	0	0	0	0	0	0	0
Steel-adult catch	0	0	0	1	1	0	2	4	4
Steel-Adipose marked	0	0	0	0	0	0	0	0	0
Steel-unmarked	0	0	0	1	1	0	2	4	4
Steel-recap-total	0	0	0	0	0	0	0	0	0
Pacific Lamprey-catch	1	30	31	4	11	34	38	87	118
Lamprey-tagged	1	29	30	4	11	33	34	82	112
Lamprey-released	0	1	1	0	0	1	4	5	6
Lamprey-recaps	0	0	0	0	1	0	0	1	1
River Lamprey	0	0	0	0	0	0	0	0	0
Pink-adult-catch	0	0	0	0	0	0	0	0	0
Chum-adult-catch	0	0	0	0	0	0	0	0	0
Chum-tagged	0	0	0	0	0	0	0	0	0
Chum-punched	0	0	0	0	0	0	0	0	0
Chum-recaps	0	0	0	0	0	0	0	0	0
Rainbow Trout	8	2	10	4	4	6	15	29	39
Pikeminnow	0	0	0	1	0	8	6	15	15
Peamouth Chubs	0	0	0	1	0	7	7	15	15
Whitefish (Round)	3	0	3	0	1	1	9	11	14
Redside Shiners	0	1	1	1	0	5	5	11	12
Cutthroat Trout	6	1	7	0	0	0	0	0	7
Sculpin	1	0	1	0	2	3	0	5	6
Dolly Varden	3	1	4	0	0	0	0	0	4
Seals	0	1	1	1	0	0	0	1	2
Suckers	0	0	0	0	0	0	0	0	0

Chinook (all FWs)																					
Week Ending (Sat)	Stat wk	2000	2001	2002	2003	2004	2005	2006	2007	2008	2009	2010	2011	2012	2013	2014	2015	2016	2017	00-17 Cum Mean	2018
26-May	21													3	-	-	6	3			2
2-Jun	22	-	-	-	-	-	-	-	-	-	-	-	-	3	-	-	-	-	-	-	0
9-Jun	23	-	40	-	-	-	5	9	-	6	-	44	10	15	14	31	12	24	13	12	7
16-Jun	24	15	235	-	80	60	69	10	2	82	7	112	86	68	71	234	295	100	37	87	37
23-Jun	25	785	454	499	2,686	424	588	243	17	441	300	492	340	80	124	465	937	369	122	520	63
30-Jun	26	1,631	1,668	1,519	3,856	512	2,289	3,214	1,021	1,209	4,099	794	614	167	807	828	1,689	791	214	1,496	
7-Jul	27	2,006	5,888	5,711	4,324	1,877	2,891	5,904	2,763	1,394	6,010	895	1,439	2,349	1,774	1,223	2,817	994	382	2,813	
14-Jul	28	3,409	11,031	6,425	5,048	2,892	3,780	7,494	5,509	3,857	6,149	990	1,597	2,586	1,868	1,510	3,020	1,185	514	3,826	
21-Jul	29	4,449	11,432	6,555	5,458	3,054	3,902	8,719	6,202	4,187	6,614	1,041	1,671	3,067	1,913	1,582	3,139	1,217	588	4,155	
28-Jul	30	4,591	11,622	6,617	5,654	3,128	3,972	8,798	8,819	4,244	6,880	1,071	1,743	3,594	1,942	1,625	3,233	1,278	609	4,412	
4-Aug	31	4,780	11,951	6,723	5,739	3,197	4,021	8,980	9,242	4,273	6,921	1,090	1,763	3,895	1,949	1,647	3,292	1,328	647	4,524	
11-Aug	32	4,928	12,029	6,751	5,765	3,256	4,045	9,038	9,345	4,294	7,067	1,112	1,769	4,003	1,961	1,660	3,328	1,351	657	4,576	
18-Aug	33	4,982	12,075	6,768	5,782	3,287	4,057	9,062	9,393	4,303	7,106	1,122	1,771	4,035	1,968	1,666	3,355	1,366	669	4,598	
25-Aug	34	4,987	12,095	6,778	5,794	3,305	4,077	9,077	9,419	4,316	7,119	1,129	1,772	4,053	1,974	1,680	3,380	1,381	678	4,612	
1-Sep	35	4,998	12,100	6,779	5,801	3,314	4,098	9,082	9,429	4,327	7,128	1,132	1,784	4,058	1,979	1,686	3,393	1,385	693	4,620	
8-Sep	36	5,000	12,104	6,784	5,802	3,314	4,103	9,089	9,434	4,331	7,131	1,137	1,792	4,059	1,981	1,691	3,397	1,387	696	4,624	
15-Sep	37	5,002	12,106	6,785	5,802	3,314	4,111	9,089	9,438	4,331	7,132	1,138	1,794	4,059	1,981	1,693	3,397	1,389	696	4,625	
22-Sep	38	5,002	12,106	6,785	5,802	3,314	4,111	9,089	9,438	4,331	7,132	1,138	1,794	4,059	1,981	1,693	3,397	1,389	696	4,625	
Grand Total		5,002	12,106	6,785	5,802	3,314	4,111	9,089	9,438	4,331	7,132	1,138	1,794	4,059	1,981	1,693	3,397	1,389	696	4,625	64
Sockeye (all Fws)																					
Week Ending (Sat)	Stat wk	2000	2001	2002	2003	2004	2005	2006	2007	2008	2009	2010	2011	2012	2013	2014	2015	2016	2017	00-17 Cum Mean	2018
26-May	21													45	-	-	12	4			12
2-Jun	22	-	-	-	-	-	-	-	-	-	5	3	-	45	-	-	-	-	-	-	3
9-Jun	23	-	45	-	-	-	7	6	-	25	5	23	21	359	62	131	30	24	20	42	4
16-Jun	24	20	219	-	372	169	158	12	19	168	51	82	385	829	693	1,435	468	113	68	292	50
23-Jun	25	1,248	487	3,799	2,692	934	1,634	588	104	1,755	1,673	983	1,499	1,122	2,273	5,363	2,673	455	488	1,654	163
30-Jun	26	3,232	2,335	7,893	7,764	2,545	5,221	3,303	2,402	6,183	5,646	2,593	3,862	3,640	17,477	11,401	7,017	1,776	1,779	5,337	
7-Jul	27	8,400	4,632	27,092	12,251	9,333	9,541	10,992	4,463	8,931	10,296	4,998	6,596	20,109	25,446	14,988	13,484	3,474	5,367	11,133	
14-Jul	28	16,870	9,040	33,521	17,398	18,102	14,766	18,141	6,767	18,858	13,783	9,556	10,235	22,987	26,950	17,594	19,846	6,035	9,393	16,102	
21-Jul	29	19,727	13,422	37,799	23,090	22,235	18,923	22,781	10,902	23,572	18,776	11,843	17,416	30,501	29,312	20,931	23,941	9,165	12,542	20,382	
28-Jul	30	21,631	20,236	43,481	31,995	26,017	23,283	28,016	20,836	26,866	22,937	14,744	26,167	42,668	32,711	24,717	32,850	14,689	15,949	26,100	
4-Aug	31	25,052	27,515	50,620	39,754	29,830	27,258	36,153	28,214	28,879	27,547	18,244	31,057	52,768	35,032	27,706	43,707	20,965	21,905	31,789	
11-Aug	32	29,030	30,412	53,809	43,283	36,054	30,479	40,532	33,823	30,959	37,438	21,629	32,745	58,536	37,127	30,262	52,545	26,477	28,651	36,322	
18-Aug	33	30,150	31,522	56,209	45,687	39,759	32,677	44,071	36,272	32,256	40,907	24,007	33,640	61,066	38,267	33,159	60,384	31,614	33,717	39,187	
25-Aug	34	30,511	32,022	57,586	47,162	42,085	36,305	47,463	37,595	33,768	42,230	24,896	34,011	62,047	38,841	35,649	65,480	34,899	38,008	41,142	
1-Sep	35	31,610	32,508	58,056	47,501	43,151	39,681	49,811	38,292	34,594	43,038	25,270	37,042	62,292	39,080	37,490	68,776	37,015	42,032	42,624	
8-Sep	36	32,371	32,752	58,700	47,556	43,676	39,994	50,769	38,680	34,702	43,333	25,523	37,993	62,365	39,173	38,252	70,398	38,619	44,126	43,277	
15-Sep	37	33,191	32,821	58,728	47,556	43,782	40,271	50,769	38,934	34,702	43,426	25,692	38,048	62,385	39,184	38,345	70,737	38,677	44,152	43,411	
22-Sep	38	33,191	32,821	58,728	47,556	43,782	40,271	50,769	38,934	34,702	43,426	25,692	38,048	62,385	39,184	38,345	70,737	38,677	44,152	43,411	
Grand Total		33,191	32,821	58,728	47,556	43,782	40,271	50,769	38,934	34,702	43,426	25,692	38,048	62,385	39,184	38,345	70,737	38,677	44,152	43,411	163
Coho (all FWs)																					
Week Ending (Sat)	Stat wk	2000	2001	2002	2003	2004	2005	2006	2007	2008	2009	2010	2011	2012	2013	2014	2015	2016	2017	00-17 Cum Mean	2018
26-May	21													-	-	-	-	-	-	-	0
2-Jun	22	-	-	-	-	-	-	-	-	-	-	-	-	-	-	-	-	-	-	-	0
9-Jun	23	-	-	-	-	-	-	-	-	-	-	-	-	-	-	-	-	-	-	-	0
16-Jun	24	-	-	-	-	-	-	-	-	-	-	-	-	-	-	-	-	-	-	-	0
23-Jun	25	-	-	-	-	-	-	-	-	-	-	-	-	-	-	-	-	-	-	-	0
30-Jun	26	-	-	-	-	-	-	-	-	-	-	-	-	-	-	-	-	-	-	-	0
7-Jul	27	-	-	-	-	-	-	-	-	-	-	-	-	-	-	-	-	-	-	-	0
14-Jul	28	-	-	1	2	1	2	-	-	2	5	1	2	-	4	-	1	-	-	0	
21-Jul	29	4	-	11	25	49	19	50	1	31	37	39	28	8	116	21	52	52	74	34	
28-Jul	30	36	17	79	367	299	273	231	103	281	369	190	144	81	755	360	181	430	336	252	
4-Aug	31	817	690	720	1,317	1,232	1,147	1,489	826	1,163	1,577	1,323	881	899	2,589	2,264	728	2,035	3,265	1,387	
11-Aug	32	2,811	4,283	2,305	2,960	4,712	2,766	3,591	2,597	3,540	5,831	4,592	1,702	4,482	6,109	4,952	2,144	4,694	6,688	3,931	
18-Aug	33	3,974	10,044	6,020	5,252	7,388	4,699	6,509	5,025	5,395	9,542	8,755	2,191	9,470	9,162	8,583	3,720	9,186	10,349	6,959	
25-Aug	34	4,555	13,106	9,005	8,420	10,234	9,147	8,309	7,575	9,113	14,056	10,598	2,415	12,580	11,908	12,819	5,017	12,844	15,013	9,817	
1-Sep	35	6,922	17,261	10,996	9,333	11,324	13,631	9,350	9,542	13,772	18,096	11,665	4,810	14,204	13,570	15,202	5,823	14,392	20,175	12,226	
8-Sep	36	7,758	22,074	14,455	9,460	11,729	14,103	9,671	10,932	14,640	19,845	12,319	5,480	15,185	14,337	16,756	6,558	15,661	22,877	13,547	
15-Sep	37	8,349	22,705	14,556	9,460	11,788	14,462	9,671	11,585	14,640	20,270	12,804	5,672	15,608	14,555	17,137	6,616	15,690	22,908	13,804	
22-Sep	38	8,349	22,705	14,556	9,460	11,788	14,462	9,671	11,585	14,640	20,270	12,804	5,672	15,608	14,555	17,137	6,616	15,690	22,908	13,804	
Grand Total		8,349	22,705	14,556	9,460	11,788	14,462	9,671	11,585	14,640	20,270	12,804	5,672	15,608	14,555	17,137	6,616	15,690	22,908	13,804	0

Steelhead (all FWs)																					
Week Ending (Sat)	Stat wk	2000	2001	2002	2003	2004	2005	2006	2007	2008	2009	2010	2011	2012	2013	2014	2015	2016	2017	00-17 Cum Mean	2018
26-May	21													0	0	0	2	1		1	
2-Jun	22	-	-	-	-	-	-	-	-	-	-	1	-	-	-	-	-	-	-	-	0
9-Jun	23	-	3	-	-	-	2	1	-	2	-	11	-	6	3	5	7	1	2	2	0
16-Jun	24	-	6	-	-	2	4	2	-	5	1	13	11	11	6	8	20	2	6	5	2
23-Jun	25	1	9	-	-	3	5	3	-	6	9	15	18	11	7	9	21	4	12	7	4
30-Jun	26	2	10	2	-	3	8	6	3	6	10	16	22	14	7	10	22	4	13	9	
7-Jul	27	2	10	4	1	4	8	6	3	6	10	16	27	18	7	12	24	5	14	10	
14-Jul	28	4	11	6	1	4	10	6	6	6	10	16	27	18	7	17	26	15	15	11	
21-Jul	29	10	13	10	2	8	12	10	7	10	10	23	33	19	10	25	39	17	19	15	
28-Jul	30	22	19	17	24	20	23	11	7	42	22	47	57	27	30	78	57	91	39	35	
4-Aug	31	93	90	115	77	72	57	33	27	109	40	103	91	77	57	174	112	321	102	97	
11-Aug	32	294	236	255	182	198	120	77	91	195	216	216	148	199	151	371	243	487	190	215	
18-Aug	33	473	452	388	284	333	155	176	213	245	571	479	198	555	226	497	377	668	356	369	
25-Aug	34	539	636	645	441	447	332	309	354	441	907	643	215	854	378	949	526	861	520	555	
1-Sep	35	826	974	695	559	606	668	410	515	708	1,309	838	664	1,134	505	1,287	650	960	761	782	
8-Sep	36	1,034	1,339	1,039	583	653	692	466	653	844	1,627	982	903	1,430	594	1,440	759	1,067	976	949	
15-Sep	37	1,198	1,435	1,100	583	656	714	466	774	844	1,667	1,180	960	1,525	612	1,472	778	1,070	982	1,001	
22-Sep	38	1,198	1,435	1,100	583	656	714	466	774	844	1,667	1,180	960	1,525	612	1,472	778	1,070	982	1,001	4
		1,198	1,435	1,100	583	656	714	466	774	844	1,667	1,180	960	1,525	612	1,472	778	1,070	982	1,001	4
Pinks (all FWs)																					
Week Ending (Sat)	Stat wk	2000	2001	2002	2003	2004	2005	2006	2007	2008	2009	2010	2011	2012	2013	2014	2015	2016	2017	MEAN EVEN YR (92-16)	2018
26-May	21																				
2-Jun	22	-	-	-	-	-	-	-	-	-	-	-	-	-	-	-	-	-	-	-	0
9-Jun	23	-	-	-	-	-	-	-	-	-	-	-	-	-	-	-	-	-	-	-	0
16-Jun	24	-	-	-	-	-	-	-	-	-	-	-	-	-	-	-	-	-	-	-	0
23-Jun	25	-	-	-	-	-	-	-	-	-	-	-	-	-	-	-	-	-	-	-	0
30-Jun	26	-	-	-	3	-	2	-	-	-	-	-	-	-	-	-	5	-	-	-	1
7-Jul	27	-	2	-	19	8	17	3	-	-	9	2	2	-	45	1	76	2	7	3	
14-Jul	28	13	43	17	334	114	156	12	1	11	34	15	46	-	237	28	235	70	62	38	
21-Jul	29	68	97	95	4,573	741	2,141	131	3	58	885	69	434	1	1,102	248	687	273	568	232	
28-Jul	30	179	1,208	441	16,373	4,206	6,769	284	622	166	4,220	220	2,010	46	5,581	2,873	1,512	2,025	2,907	1,202	
4-Aug	31	1,207	11,139	2,523	23,566	11,400	12,094	1,118	5,643	446	8,014	539	5,781	595	10,236	6,914	2,715	6,337	11,662	3,449	
11-Aug	32	5,121	19,036	6,674	27,813	25,444	15,229	1,785	11,391	938	25,157	1,908	8,167	2,001	18,065	10,142	4,581	9,242	19,059	6,819	
18-Aug	33	7,879	24,858	10,927	30,003	32,033	16,678	2,301	15,167	1,199	33,928	3,402	8,776	4,834	21,126	12,327	5,632	11,441	24,488	9,675	
25-Aug	34	8,695	28,565	13,074	32,614	34,872	18,603	2,637	16,740	1,554	38,563	4,103	8,927	6,452	23,329	17,804	6,195	12,580	29,533	11,782	
1-Sep	35	9,755	32,995	13,816	33,375	35,467	19,576	2,783	17,378	1,849	41,143	4,402	10,061	7,201	24,364	21,706	6,385	12,911	34,932	12,934	
8-Sep	36	10,125	40,298	15,834	33,560	35,596	19,719	2,817	17,599	1,932	42,012	4,530	10,449	7,599	24,725	23,584	6,467	13,191	37,705	13,508	
15-Sep	37	10,194	42,508	15,893	33,560	35,605	19,781	2,817	17,662	1,932	42,120	4,610	10,637	7,694	24,801	24,038	6,476	13,197	37,748	13,588	
22-Sep	38	10,194	42,508	15,893	33,560	35,605	19,781	2,817	17,662	1,932	42,120	4,610	10,637	7,694	24,801	24,038	6,476	13,197	37,748	13,588	0
		10,194	42,508	15,893	33,560	35,605	19,781	2,817	17,662	1,932	42,120	4,610	10,637	7,694	24,801	24,038	6,476	13,197	37,748	13,125	0
Chum (all FWs)																					
Week Ending (Sat)	Stat wk	2000	2001	2002	2003	2004	2005	2006	2007	2008	2009	2010	2011	2012	2013	2014	2015	2016	2017	00-17 Cum Mean	2018
26-May	21													0	0	0	0	0			
2-Jun	22	-	-	-	-	-	-	-	-	-	-	-	-	-	-	-	-	-	-	-	0
9-Jun	23	-	-	-	-	-	-	-	-	-	-	-	-	-	-	-	-	-	-	-	0
16-Jun	24	-	-	-	-	-	-	-	-	-	-	-	-	-	-	-	-	-	-	-	0
23-Jun	25	-	-	-	-	-	-	-	-	-	-	1	-	-	-	-	-	-	-	-	0
30-Jun	26	-	-	-	-	-	-	-	-	-	1	2	-	-	1	-	1	-	-	-	0
7-Jul	27	-	-	5	-	-	-	1	-	-	1	2	1	1	1	1	3	-	1	1	1
14-Jul	28	1	1	5	1	1	1	2	-	6	1	2	3	1	3	2	4	-	2	2	2
21-Jul	29	1	4	6	6	3	4	5	-	11	1	9	7	2	4	2	5	-	2	4	4
28-Jul	30	2	8	10	32	12	20	6	7	17	11	15	17	3	7	11	7	14	7	11	
4-Aug	31	11	19	15	54	24	54	23	22	22	13	23	41	13	9	17	16	33	26	24	
11-Aug	32	24	35	17	84	64	73	40	53	27	23	28	59	15	14	28	29	51	30	39	
18-Aug	33	43	62	25	99	99	80	67	75	28	45	45	72	33	15	33	44	102	34	56	
25-Aug	34	64	87	34	141	140	99	101	91	35	58	61	77	55	23	49	81	132	39	76	
1-Sep	35	128	103	39	169	215	134	127	107	49	83	67	124	80	45	61	103	155	47	102	
8-Sep	36	182	147	52	175	239	139	139	121	52	104	71	144	99	51	79	137	224	68	124	
15-Sep	37	240	162	54	175	242	144	139	132	52	108	75	156	106	52	83	141	228	68	131	
22-Sep	38	240	162	54	175	242	144	139	132	52	108	75	156	106	52	83	141	228	68	131	
Grand Total		240	162	54	175	242	144	139	132	52	108	75	156	106	52	83	141	228	68	131	0

Chinook (GW wheels only)		Stat	1994	1995	1996	1997	1998	1999	2000	2001	2002	2003	2004	2005	2006	2007	2008	2009	2010	2011	2012	2013	2014	2015	2016	2017	2018	Cum	94-17 Cum	Mean	
Week Ending (Sat)	wk																														
26-May	21																				3	0							1		
2-Jun	22				9		29											0	4		13	8	15	6	3	0		3	9		
9-Jun	23		94	19	96	178		18		163			6	28	10		29	0	21	0	58	37	77	55	31	10		7	47		
16-Jun	24		517	232	278	444	644	18	272	428		455	271	198	23	3	94	56	67	10	70	63	139	283	88	30		24	204		
23-Jun	25		879	533	307	870	981	285	1,205	1,283	697	1,405	275	689	829	318	250	733	227	59	144	316	213	824	190	71		40	566		
30-Jun	26		1,581	632	1,175	1,919	1,083	838	1,416	3,354	1,458	1,510	660	856	1,464	971	382	1,118	279	163	943	534	301	1,263	340	97			1,014		
7-Jul	27		1,907	746	1,337	2,099	1,156	1,101	1,563	4,097	1,676	1,710	869	1,046	1,565	1,880	787	1,187	286	352	1,004	570	365	1,345	394	129			1,214		
14-Jul	28		1,953	772	1,415	2,203	1,175	1,240	1,859	4,375	1,704	1,771	987	1,058	1,733	1,889	877	1,227	306	438	1,152	583	380	1,410	419	153			1,295		
21-Jul	29		1,988	785	1,435	2,215	1,186	1,275	1,892	4,409	1,723	1,833	1,013	1,084	1,753	2,073	887	1,255	312	476	1,265	591	395	1,427	425	166			1,328		
28-Jul	30		1,998	787	1,448	2,224	1,189	1,297	1,908	4,478	1,735	1,861	1,032	1,095	1,767	2,148	898	1,271	316	502	1,319	595	404	1,450	437	174			1,347		
4-Aug	31		2,005	789	1,463	2,243	1,198	1,315	1,961	4,500	1,743	1,877	1,050	1,108	1,784	2,156	907	1,298	322	515	1,340	601	420	1,459	453	194			1,363		
11-Aug	32		2,011	794	1,467	2,254	1,200	1,337	1,991	4,520	1,749	1,888	1,081	1,114	1,797	2,171	913	1,311	330	521	1,355	602	425	1,469	466	200			1,374		
18-Aug	33		2,018	796	1,476	2,277	1,204	1,349	2,001	4,525	1,757	1,891	1,095	1,121	1,812	2,182	919	1,319	332	526	1,364	606	432	1,483	474	208			1,382		
25-Aug	34		2,029	797	1,482	2,284	1,213	1,353	2,004	4,529	1,757	1,896	1,102	1,145	1,817	2,190	932	1,329	333	527	1,367	610	440	1,505	479	213			1,389		
1-Sep	35		2,031	799	1,487	2,287	1,216	1,356	2,007	4,530	1,763	1,899	1,103	1,151	1,821	2,196	940	1,330	334	528	1,368	612	443	1,510	479	225			1,392		
8-Sep	36				1,489		1,220	1,357	2,007	4,531	1,764			1,157	1,821	2,201	940	1,332	337	541	1,368	612	446	1,510	483	226			1,392		
15-Sep	37				1,489				2,008					1,161	1,821	2,204	940			340	542										
22-Sep	38								2,008						2,204					340	545										
Grand Total			2031	799	1489	2287	1220	1357	2008	4531	1764	1899	1103	1161	1821	2204	940	1332	340	545	1368	612	446	1510	483	226	40		1,392		

Sockeye (GW wheels only)		Stat	1994	1995	1996	1997	1998	1999	2000	2001	2002	2003	2004	2005	2006	2007	2008	2009	2010	2011	2012	2013	2014	2015	2016	2017	2018	Cum	94-17 Cum	Mean	
Week Ending (Sat)	wk																														
26-May	21																				45	-	-						8		
2-Jun	22				8		86	82	33				46	42	12		78	5	6		338	42	45	12	4	-		0	42		
9-Jun	23		19	41	86	164	823	33	426	120		1,471	745	562	107	26	467	511	155	4	665	450	558	126	38	17		4	119		
16-Jun	24		166	587	884	164	1,508	1,654	2,889	1,421	4,186	3,311	995	2,108	1,093	1,060	1,949	3,274	1,237	367	2,840	7,911	3,510	3,453	528	421		155	2,075		
23-Jun	25		558	2,071	848	614	2,458	2,243	4,615	5,346	2,995	10,908	5,015	3,330	4,224	3,490	2,968	3,760	4,937	2,114	1,262	8,771	10,000	4,605	5,553	1,330	1,061			4,305	
30-Jun	26		2,906	4,094	5,340	6,827	4,039	3,031	10,267	7,229	4,608	15,326	7,362	7,769	6,112	5,737	4,450	7,211	6,467	3,095	3,162	9,749	10,641	5,571	7,916	1,985	2,393			6,442	
7-Jul	27		6,457	7,202	6,827	4,039	3,031	10,267	7,229	4,608	15,326	7,362	7,769	6,112	5,737	4,450	7,211	6,467	3,095	3,162	9,749	10,641	5,571	7,916	1,985	2,393				6,442	
14-Jul	28		6,996	8,749	9,128	5,747	3,511	13,591	8,595	7,277	17,181	9,904	10,480	8,087	7,625	4,639	9,070	8,012	4,142	3,899	12,915	11,317	6,643	9,469	2,956	3,285				8,163	
21-Jul	29		11,371	10,137	10,917	7,534	4,000	16,037	9,549	9,186	20,146	12,566	12,473	9,927	9,518	7,644	10,288	9,286	4,804	6,223	17,460	12,056	7,786	11,659	4,498	4,004				9,961	
28-Jul	30		13,811	11,047	12,758	8,911	4,454	16,953	10,371	12,247	22,636	15,044	13,676	10,869	11,527	10,225	11,144	11,328	5,621	9,213	20,063	12,364	8,666	15,113	5,911	4,819				11,589	
4-Aug	31		14,165	11,648	14,017	10,051	4,719	18,508	12,398	13,225	23,600	16,527	15,322	11,536	13,142	11,690	11,667	14,110	6,368	11,101	21,458	12,579	9,422	17,280	7,248	5,937				12,822	
11-Aug	32		16,450	12,216	14,541	11,151	4,949	19,498	13,000	13,591	24,206	17,378	16,780	12,277	14,239	12,321	12,161	14,819	6,746	11,842	21,992	12,705	10,258	19,556	8,631	7,120				13,668	
18-Aug	33		17,446	12,621	14,826	12,182	5,146	19,884	13,122	13,734	24,745	17,720	17,597	12,861	15,530	12,624	12,601	15,098	6,975	12,262	22,153	12,773	10,746	20,711	9,534	7,799				14,195	
25-Aug	34		17,777	12,868	15,010	12,774	5,242	20,112	13,198	13,829	24,947	17,822	17,856	13,855	16,017	12,773	12,781	15,247	7,058	12,416	22,185	12,830	11,119	22,341	10,127	8,496				14,528	
1-Sep	35		17,916	13,035	15,145	12,774	5,293	20,190	13,333	13,910	25,323	17,860	17,948	14,292	16,445	12,864	12,863	15,349	7,085	12,635	22,197	12,841	11,390	23,077	10,740	9,260				14,826	
8-Sep	36				15,155		5,368	20,283	13,393	13,933			17,993	14,550	16,445	12,919	12,864	15,386			22,204	12,847	11,530	23,438	11,159	9,667				14,826	
15-Sep	37				15,167		5,377	20,291	13,417				17,993	14,732	16,445	12,941	12,864			7,144	13,287										
22-Sep	38						5,377	20,319	13,417							12,942				7,146	13,377										
Grand Total			17,916	13,035	15,167	12,774	5,377	20,319	13,417	13,933	25,323	17,860	17,993	14,732	16,445	12,942	12,864	15,386	7,146	13,377	22,204	12,847	11,530	23,438	11,159	9,667	155		14,826		

Steelhead (GW wheels only)		Stat	1994	1995	1996	1997	1998	1999	2000	2001	2002	2003	2004	2005	2006	2007	2008	2009	2010	2011	2012	2013	2014	2015	2016	2017	2018	Cum	94-17 Cum	Mean
Week Ending (Sat)	wk																													
26-May	21				0	0	0														0	0	0						0	
2-Jun	22				4	0	0														5	2	3	2	1	1			0	2
9-Jun	23		1	1	6	16	3	2		6			1	2	2	0	4	0	8	0	10	5	8	9	1	1		0	4	
16-Jun	24		4	2	8	19	8	2	1	8		0	2	4	2	0	4	7	10	1	10	6	8	14	2	2		0	5	
23-Jun	25		5	2	8	19	9	2	1	8	0	0	2	5	4	2	4	10	11	5	13	6	10	14	3	5		0	6	
30-Jun	26		6	2	9	19	9	2	1	8	0	0	2	5	4	2	4	10	11	6	16	6	10	14	3	5			6	
7-Jul	27		6	2	9	19	10	3	2	8	0	0	2	5	4	5	4	10	11	6	16	6	10	14	3	5			7	